

CCSVI MRI DATA PROCESSING

by MR Innovations, Inc.

Enhance your diagnosis using our technical imaging analysis services:

EXPEDITED SHORT REPORT (ESR)

Half the price of the FTR

We provide a 24 hour turn-around for the expedited short report (ESR) which summarizes essential quantitative measurements and structural assessments that include flow measurements and MRV data analysis.

FULL TECHNICAL REPORT (FTR)

Our full technical reports have a 1 to 2 week turn-around time and include a complete quantitative analysis of our comprehensive protocols, as well as a two page summary technical report that provides a compact overview of the FTR.

TO VIEW SAMPLES OF THESE REPORTS, VISIT OUR WEBSITE AT WWW.MRINNOVATIONS.COM

Dedicated software for the analysis of neurodegenerative diseases including:

- Multiple Sclerosis
- Parkinson's Disease
- Stroke
- Vessel Wall Imaging
- Traumatic Brain Injury
- Dementia
- Idiopathic Intracranial Hypertension
- Headache

Our software (SPIN) is dedicated to MR image analysis:

- SPIN is a specialized software for MRI image analysis and clinical needs provided by MR Innovations.
- SPIN software has been under development for more than 10 years and has been used and referenced in many scientific publications.
- SPIN is designed for 2D, 3D and 4D image analysis, display, segmentation, and data quantification.
- SPIN is used to prepare technical reports for clinicians.

IMAGING PARTNERS

Wayne State University (Detroit, MI USA)

Loma Linda University (Loma Linda, CA USA)

Applied fMRI Institute (San Diego, CA USA)

Synergy Health Concepts (Newport Beach, CA USA)

Midwest Center for Advanced Imaging (Naperville, IL USA)

Centennial Medical Imaging (Las Vegas, NV USA)

Don Gnocchi Foundation (Milan, ITALY)

False Creek Healthcare, LP (Vancouver, BC CANADA)

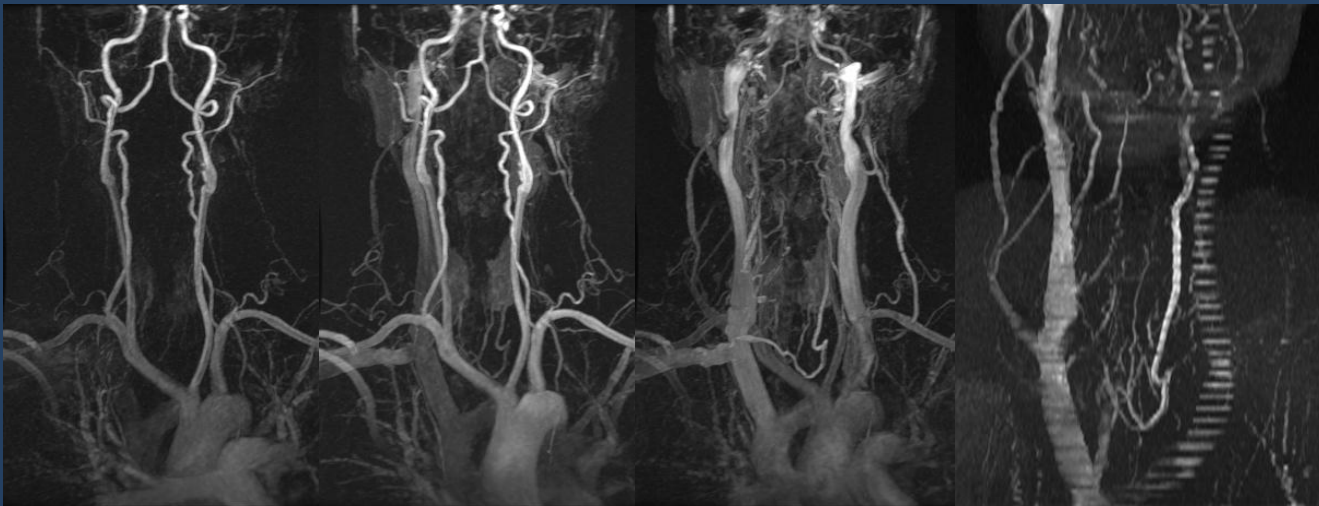
Contact us for more information on how to collaborate and/or join the International MR Imaging Consortium (IMRIC).

COLLABORATE WITH MR INNOVATIONS

CCSVI and Traumatic Brain Injury Protocols

These protocols include sequences such as: Dynamic Contrast Enhanced MR Angiography and Venography, Time of Flight MR Venography, pre and post contrast T1WI, T2WI, T2 FLAIR, Perfusion Weighted Imaging, Diffusion Tensor Imaging, Phase Contrast MRI, pre and post contrast 3D Volumetric Interpolated Breathhold Examination (VIBE), and Susceptibility Weighted Imaging. See our website at www.ms-mri.com to access all the levels of our protocols from clinical to research applications.

1. We support the use of a special CCSVI MRI protocol
2. State of the art neuroimaging protocols
 - o designed for diseases such as Multiple Sclerosis, Parkinson's Disease, Stroke, Dementia and Traumatic Brain Injury
3. State of the art quantitative data processing
 - o we offer quantification of flow, perfusion and DTI data
4. Access to our research team to develop new ideas
 - o we develop new sequences and software for specific applications
5. Potential to get involved in grants
 - o Dr. E. Mark Haacke has a grant history with NIH and industrial funding of more than \$10M
6. Opportunity to join the IMRIC (the International MRI Consortium)
 - o this will develop into a group of 10 to 20 3T sites providing a database in neurodegenerative disease
7. Opportunity to participate in national and international conferences on these topics
 - o we have presented 100s of abstracts on imaging over the last 25 years and have great experience in publishing papers
8. Research agreement with Siemens



Above: The cranial and cervical vasculature are shown: Images 1-3 are sequential 3D TRICKS images showing an arterial phase time point, an early venous phase time point, and one later venous phase time point. Also shown is a reformatted 2D TOF MRV image of compromised flow in the LIJV (last frame image 4).



Magnetic Resonance Innovations, Inc.
440 East Ferry Street
Detroit, MI 48202
313-758-0065 • 313-758-0068

info.mrinnovations@gmail.com

www.mrinnovations.com
www.ms-mri.com