

TS- transverse sinus

IJV-internal jugular vein

EJV-external jugular vein

PVP- perivertebral venous plexus

TV- thyroid vein

BR- brachiocephalic vein

SV- subclavian vein

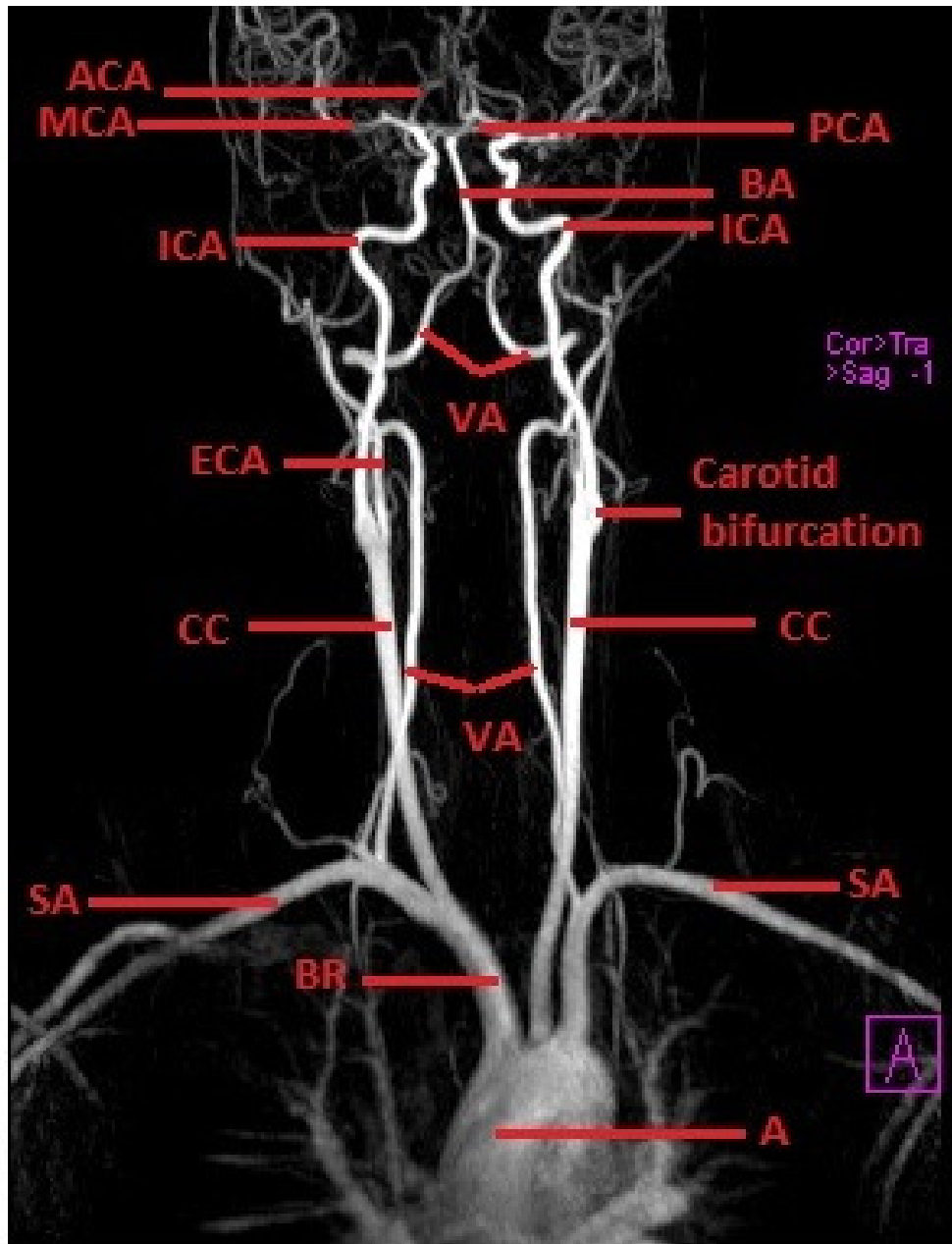
SVC- superior vena cava

CC- common carotid artery

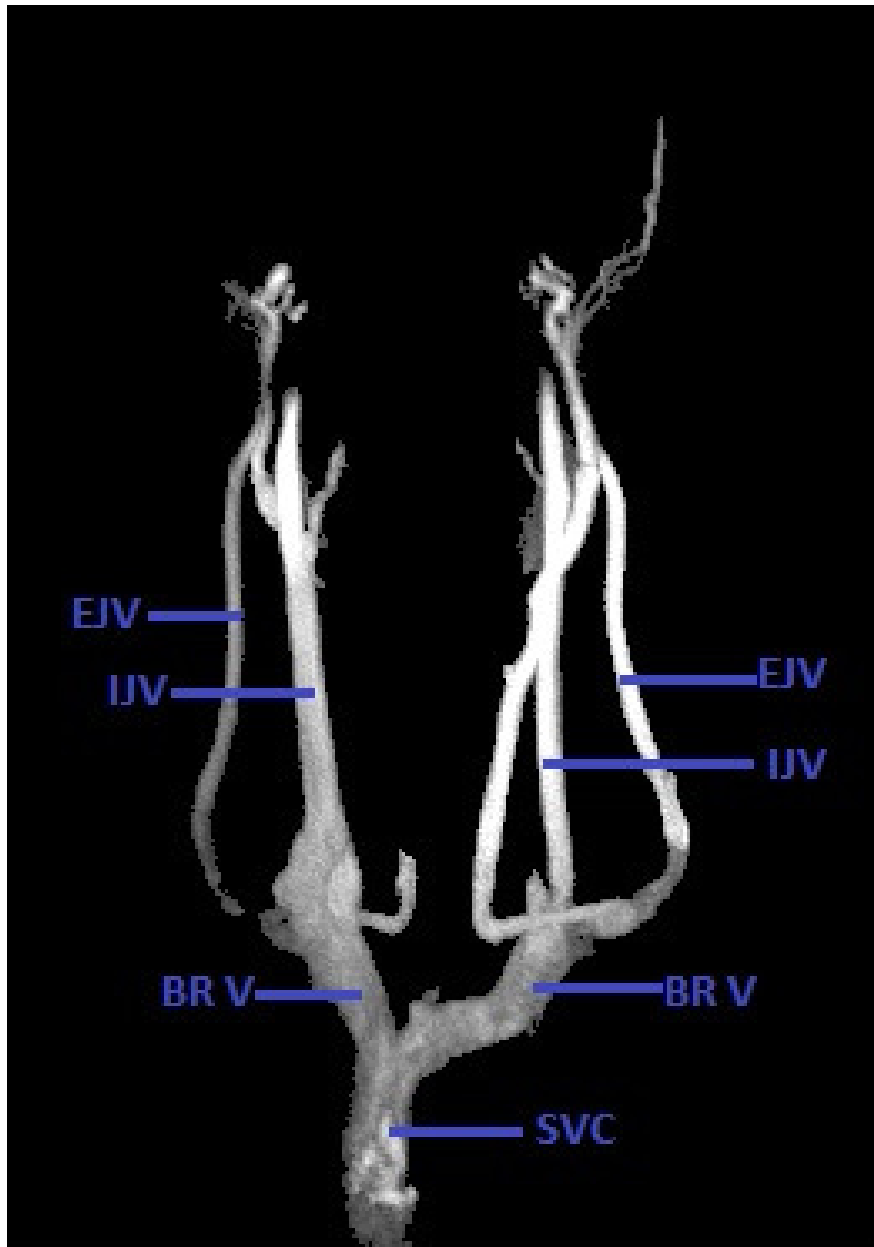
SA- subclavian artery

BRA- brachiocephalic trunk

A- aorta



- VA- vertebral artery
- ICA- internal carotid artery
- BA- basilar artery
- PCA- posterior cerebral artery
- MCA- middle cerebral artery
- ACA- anterior cerebral artery
- CC- common carotid artery
- SA- subclavian artery
- BR- brachiocephalic trunk
- A- aortic arch
- ECA- external carotid artery



- EJV- external jugular vein
- IJV- internal jugular vein
- BRV- brachiocephalic vein
- SVC- superior vena cava